



**GROW TREES,  
LIVELIHOODS & FUTURES BY**  
*leaving a gift*  
**IN YOUR WILL**



# A GIFT IN YOUR WILL

## *can transform the lives of families living in Africa's drylands*

Our work is made possible thanks to donations from supporters like you. By leaving a gift in your will, you can leave a legacy that will be felt for generations to come.

### *Why we need your help*

Trees truly are a lifeline for families living in the drylands of Africa, where the effects of the climate crisis are prevalent. In this region, temperatures are rising 1.5 times faster than the global average, and this is having devastating effects.

The climate crisis, overuse of land and clearing of forests for farms are degrading Africa's fertile land and making it arid.

This is known as desertification. Without trees to stabilise the soil, store water, and protect the land, droughts and floods are becoming more frequent and severe.

### *How we make a difference*

At Tree Aid, we support people to grow trees and sustainably manage land. This leads to improved soil fertility and regenerated land, helping to reverse some effects of the climate crisis.

Trees provide much-needed food, such as fruits, nuts and seeds, helping families to feed themselves throughout the year. Moringa trees' tiny leaves are rich in vitamins, protein, iron, and calcium, and can be harvested after just a few months. Trees also provide opportunities to earn an income; nuts from a shea tree can be turned into shea butter which can be sold at market to be used in cooking or cosmetics.

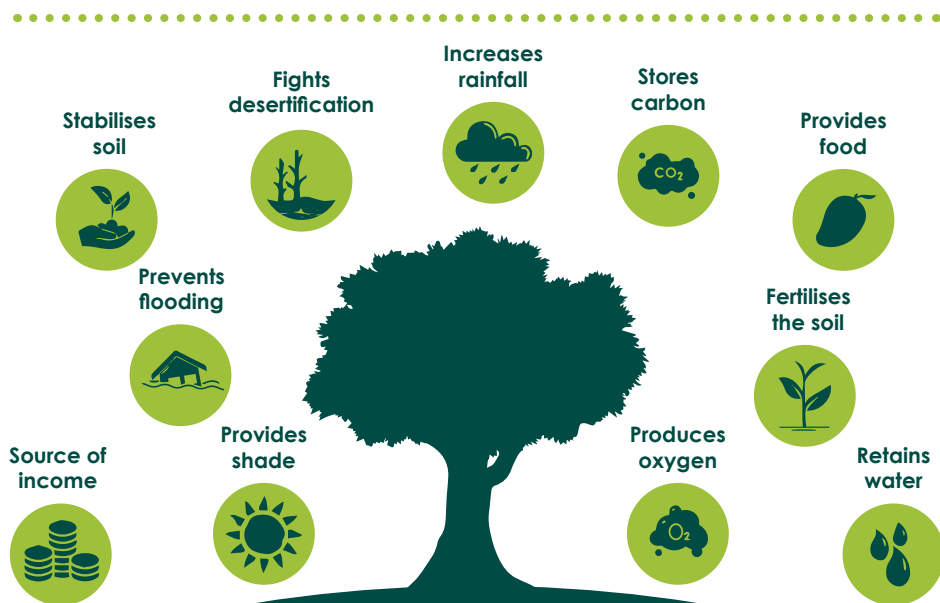
**A gift in your will can transform the lives of so many people living across the drylands of Africa, whilst also combatting the climate crisis and providing younger generations with a brighter future.**



# How your gift will TRANSFORM LIVES

Your support helps communities throughout Burkina Faso, Senegal, Mali, Ghana, Niger and Ethiopia to grow trees to lift themselves out of poverty and regenerate the land they so heavily rely on.

**Trees are a solution** – providing nutritious food, products to sell, stabilising the soil and improving its fertility, and protecting the land from droughts and flooding. They also absorb carbon, providing a nature-based solution to global heating.



"I choose to support Tree Aid and have left a gift in my will as I find the scale of their work and the Great Green Wall impressive. I also like that the people who live there can see the difference and the trees growing."

- Dina, Tree Aid Supporter

# ASSETOU'S story

Assetou is a wife and mother of five living in the Nobéré region of Burkina Faso. Before joining a Tree Aid project, Assetou's main source of income was farming. In this region, it is very challenging and farmers often have to wait for the rainy season to work, leaving them with little income during the dry season.

Thanks to a Tree Aid project, Assetou and other women in her community are preparing seedlings and readying the nutrition garden for moringa and baobab production. They also grow onions, tomatoes and other vegetables for themselves and their families to eat.

*"Through growing the seedlings in the nursery, we can sell them and get money. We can also plant them – if we plant them and take care of them, it's also a benefit for human beings."*

By diversifying her income and growing trees to protect the environment, Assetou's income has improved, and

the dry season is made easier for her and many others in her community.

With the project's support, Assetou bought her daughter a bike to enable her to get to school. Assetou has many hopes for her family's future and by taking part in this project, she is already seeing the benefits.

*"Some of my daughters are still at school, one is studying fashion, one is working in a restaurant. I hope something better for them for tomorrow. I want my daughters to be successful."*

**By leaving a gift to Tree Aid in your will, you can support women like Assetou to grow trees, providing food and income for the dry season and protecting the environment for tomorrow.**



# Ways you can LEAVE A GIFT IN YOUR WILL

Gifts in wills are very special gifts, no matter how big or small. You can be sure that it will have an incredible impact on communities across the drylands of Africa – **now and for generations to come.**

You can include a gift in your will to Tree Aid when writing your will for the first time. If you already have a will and wish to add a gift to Tree Aid, we recommend speaking to your solicitor as you may be able to make a codicil – a document used to amend your will without having to re-write it, but this depends on the complexity of the amendment. It's a good idea to keep your will up to date, this will ensure that the people and causes you care about are looked after.

There are three main types of gifts you can leave in your Will:

- **Pecuniary** – allows you to leave a specific amount of money to Tree Aid.
- **Residuary** – allows you to leave a share of your estate to Tree Aid, once your family and friends have been taken care of. This can be the best way to leave a gift because as a portion or a percentage of your estate, it should retain its value over the years.
- **Specific** – allows you to leave a specific asset to Tree Aid, such as property, jewellery, artwork, etc.

## Inheritance Tax

A gift to Tree Aid in your will is not subject to inheritance tax.

If you leave 10% or more of your total estate to Tree Aid, you can reduce the inheritance tax rate.

We advise speaking to your solicitor if you have any queries on Inheritance Tax.

## Information for your solicitor or will writer

If you do decide to leave a gift to Tree Aid in your will, you'll need to provide your solicitor with the information below.

- **Charity name:** Tree Aid
- **Charity address:** Brunswick Court, Brunswick Square, Bristol, BS2 8PE
- **Charity number:** 1135156



# OUR LEGACY

## promise

Here at Tree Aid, we know that a will is extremely personal, and it's your opportunity to make a declaration of the things you care about most.

Leaving a gift in your will to Tree Aid is a very special way of showing your support. **We understand how important it is**, and that's why we're giving this promise to you.

### Your privacy is important to us.

We always ensure that great care is taken to respect your privacy and appreciate that your will is personal to you.

### Your family and friends come first.

We understand that the people close to you will be your priority when writing or amending your will.

### Your decision is yours alone.

We will respect the need for you to consider it carefully and in your own time.

**Every penny of your gift will make a difference.** We will spend it carefully so that it has the most impact.

**Your gift will be treated with discretion.** There is no pressure to let us know you've included us in your will, but it does help us to plan for future work. If you do leave a gift, we will handle it efficiently but with care, sensitivity and respect.

**We are always here.** If you have any questions about your legacy gift and the impact it will make to communities across Africa, we're here to answer them.



# Legacy FAQS

These are some of the most common questions we receive about leaving a gift in your will. If you have any questions that aren't answered here, please contact us on **0117 909 6363** and ask to speak to our supporter care team or email **giftsinwills@treeaid.org**.

## ? **How do I leave a gift to Tree Aid in my will?**

See page 5 for more information on the types of gifts in wills. We advise you to speak to a solicitor when making a will.

## ? **I already have a will, how do I add a gift to Tree Aid to it?**

You may be able to add a gift in your will by using a document called a codicil. This document amends an existing will without having to re-write the whole document. This can only be used for simple amendments so we would advise speaking to your solicitor about the best way to update your will.

## ? **If I have left a gift to Tree Aid in my will, should I tell you?**

We understand that making a will is a personal decision, however, it would be great to hear from you if you've decided to leave a gift to Tree Aid. This will enable us to acknowledge your important and generous decision and keep you informed about our ongoing work, if you wish.

## ? **What if I change my mind?**

You can change the contents of your will at any time and for any reason – speak to your solicitor for advice about this.

## ? **How will Tree Aid use my gift?**

We will spend your donation across our work wherever the need is greatest, empowering communities to re-green their environment and grow a source of food and income.

# THANK YOU

*for considering remembering  
Tree Aid in your will*

Gifts in wills ensure that communities can grow nutritious food and incomes today while growing trees and restoring the environment for future generations.

Our team is always on hand to answer any questions you may have about gifts in wills or the difference your support will make. You can contact us by using the following details:

Call us on **0117 909 6363** and ask to speak to our supporter care team or email **giftsinwills@treeaid.org**.

You can also visit our website **www.treeaid.org/legacy** for more information or to keep updated on our latest projects.

Tree Aid is a registered charity in England under charity no. 1135156 and a company limited by guarantee registered in England no. 03779545 at Brunswick Court, Brunswick Square, Bristol, BS2 8PE. Printed on 100% recycled paper. Correct at the time of printing (June 2024).



Registered with  
FUNDRAISING  
REGULATOR

